

INTERMATIC[®]
Providing a brighter solution.™

PROFESSIONAL LIGHTING · POOL & SPA · SURGE PROTECTION



PURE[™]

Stand Alone
Salt Chlorine Generator

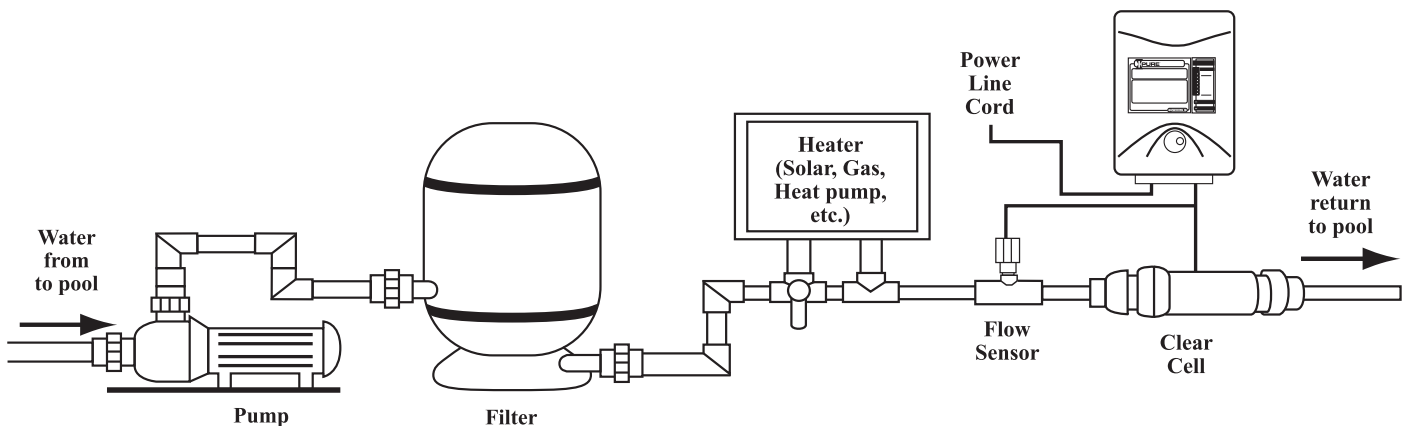
WEATHERPROOF · ENERGY CONTROLS

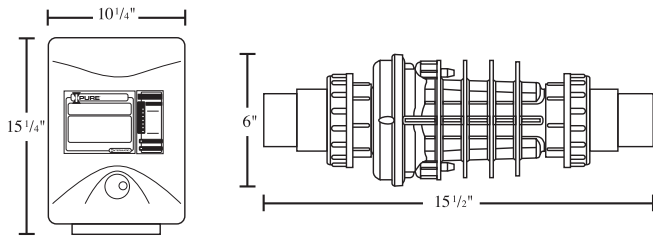
Taking the Chore out of Chlorination

While traditional Salt Chlorine Generators can be difficult to manage and operate, the new I-Pure Salt Chlorine Generator takes the hassle out of sanitizing pools and spas. By eliminating extraneous features, the I-Pure system provides homeowners with easy-to-use, high quality sanitation at a competitive price.

Continual Purification – How it works: The I-Pure Salt Chlorine Generator uses a very low concentration of salt, less than a human tear drop, and converts it into chlorine that sanitizes your pool or spa. After sanitizing is complete, the chlorine reverts back into sodium chloride. This process of purification continues, making it virtually unnecessary to add extra sanitizing chemicals to your pool or spa. The level of necessary chlorine in the pool or spa is affected by a number of factors such as sunlight, bather load, debris and water temperature, all of which destroy chlorine.

The I-Pure Salt Chlorine Generator has little effect on pH or total alkalinity. Both must still be monitored and adjusted to allow chlorine to have its greatest effect. By using a good quality pool test kit and the simple instructions outlined in our manual, your I-Pure system will help maintain a sparkling clean, trouble-free pool for many years with minimal effort.



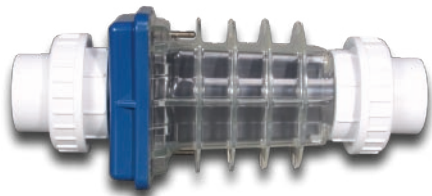
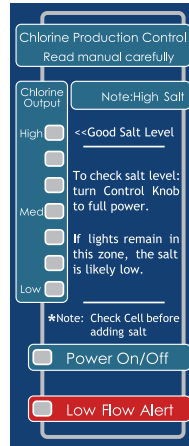


Note: High Salt – When a red light is illuminated, it indicates that the salt level in the pool is on the high side. This does not harm the I-Pure system, but is provided as a cautionary notice to the user not to add more salt to the pool.

Power Meter – Green lights indicate the system’s chlorine output. The higher lights indicate higher chlorine production. Turning the control knob clockwise increases chlorine production and should increase the chlorine output reading.

Power Light – When the system is turned on and the pump is operating, the green Power Light should be illuminated indicating that power is reaching the Control Box.

Low Flow Alert – During insufficient water flow, a red light will illuminate and the generator automatically shuts off. This will occur while the pump is pushing air out of the plumbing, if the pump fails to prime or a blockage occurs.



Cell Features

The I-Pure system utilizes plates that are specially coated to convert regular table salt into natural chlorine. The system uses the most advanced self-cleaning technologies, including reversed polarity, which allows the Cell to stay cleaner and last longer than other self-cleaning cells. The clear Cell also allows for easy regular inspections for calcium build-up.

“Super Chlorination” Feature

The I-Pure system incorporates a Super Chlorination feature, which can be activated by turning the Control Knob up to full chlorine output. This is a quick and easy way to boost chlorine levels to compensate for high bather loads, increases in temperature, heavy rains and/or the presents of algae.

Cleaner Healthier Water

With an I-Pure system, your pool will have fewer chemicals and softer water. You will always jump into cleaner healthier water with a soft silky feel that is very easy on your skin and eyes.

Convenience

Your pool can be the relaxing paradise you always wished it could be. With an I-Pure system, buying, hauling and handing chlorine is a thing of the past. Spend your time enjoying your pool rather than wrestling with a complicated purity system. One simple dial controls the I-Pure system.



PE25K120V PE24K240V Salt Chlorine Generator

- Plastic housing resists corrosion
- Clear cell housing allows for easy regular inspection of calcium build up
- Reverse Polarity feature enables cells to be self cleaning
- Self adjustable control dial increases or decreases chlorine production
- For pools up to 25,000 gallons
- Models available for 120 or 240 volts
- Produces 1.1 lbs. of chlorine every 24 hours
- One of the top chlorine producers of all Salt Chlorine Generators on the market today



PE40K120V PE40K240V Salt Chlorine Generator

- Same features as PE25K series
- For pools up to 40,000 gallons
- Models available for 120 or 240 volts
- Produces 1.7 lbs. of chlorine every 24 hours
- One of the top chlorine producers of all Salt Chlorine Generators on the market today

Checklist for proper operation:

Salt	3000 to 4000 ppm
Free Chlorine	1 to 3 ppm
PH	7.2 to 7.8
Total Alkalinity	80 to 180 - adjust per calcium
hardness level	
Stabilizer (Cyanuric Acid)	60 - 8
Nitrates	0 ppm
Metals	0 ppm
Phosphates	0 ppm
Calcium Hardness	Determine level for individual pool surface
Saturation Index	-0.3 to 0.3 (0 is ideal)

I-Wave Wireless Pool/Spa Control

Intermatic's wireless pool and spa controls utilize ground-breaking Z-wave™ technology. While some controls communicate transmission problems, Intermatic's wireless devices allow total and uninterrupted communication between the controller and the equipment.

Intermatic's modular approach provides for added diversity and convenience. Modules are capable of working independently or within a system. Portions can be added or replaced without interfering with the original system, and each system can be designed to incorporate as many or as few features as needed to accomplish the task at hand – making Intermatic the most value added and cost-effective choice.

All I-Wave Models include wireless transmitter and transceiver, two PE24VA valve actuators, five total circuits (three timed and two on demand), two-speed control, water temperature display, heater temperature control, fireman switch, freeze protection and 125 Amp breaker base.



Model	Mechanisms	Switch	Transformer	Volts 60Hz	Shipping Weight
PE45343RC	P1353ME and P4243ME	5 - SPST	None	120 or 208-240	44.0 lbs.
PE45343RCT1	P1353ME and P4243ME	5 - SPST	100 Watt	120 or 208-240	51.0 lbs
PE45343RCT3	P1353ME and P4243ME	5 - SPST	300 Watt	120 or 208-240	56.0 lbs
PE650	Wireless Receiver	–	–	–	5.5 lbs
PE950	Wireless Transmitter	–	–	–	5.5 lbs



Intermatic, Inc.
7777 Winn Road
Spring Grove, Illinois 60081-9698

www.intermatic.com
Intermatic Customer Service: 815-675-7000
(8 a.m. through 4:30 p.m. CST, Monday through Friday)

©2005 Intermatic, Inc.
Printed in the U.S.A.



PE650



PE950

300PS10158